

WELCOME TO MAASTRICHT REGION

Catch your breath in the most intimate metropolis on earth!





Programmamanager Internationale Arbeidsmarktaanpak Zuid-Limburg

- Dienstverlening grenswerkers en internationals
- Uitvoering meerjarenprogramma "aantrekken & behouden van euregionaal en internationaal talent (in kennis- en kundeberoepen)
- Euregionale coalitie en samenwerking

PLAY ▶



SP

00:00:12

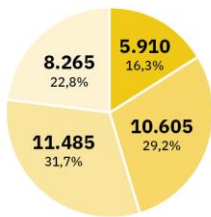
SOUTH LIMBURG'S INTERNATIONAL LABOUR MARKET

36.265

INTERNATIONALS LIVING IN SOUTH LIMBURG

That's 6,04% of the South Limburg population

SEGMENTATION IN 4 CATEGORIES

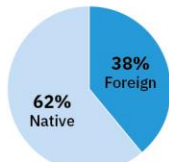


- Knowledge workers
- Labour migrants
- Partners (spouses)
- International students

TOP 3 COUNTRIES OF ORIGIN:

- | Category | 1. Country (Percentage) | 2. Country (Percentage) | 3. Country (Percentage) |
|-------------------------|-------------------------|-------------------------|-------------------------|
| Knowledge workers: | Belgium (30%) | Germany (20%) | Italy (5%) |
| Labour Migrants: | Poland (20%) | Germany (13%) | Belgium (10%) |
| Partners (spouses): | Germany (16%) | Poland (4%) | India (3%) |
| International students: | Germany (33%) | Italy (11%) | België (7%) |

SELECTION OF EMPLOYERS WITH INTERNATIONAL EMPLOYEES



Total share of foreign employees
All 10 companies



Legend: Crossborder workers (blue), Internationals (light blue), Locals (white)

TERMS

'International' labour market: Consists of internationals (foreign nationals living and working in South Limburg) and cross-border workers. Internationals are knowledge workers or labour migrants.

Knowledge worker: An economically active employee. Minimum wage (gross per month, indexed every January 1st) per age category are < 30: € 3,909 and > 30: € 5,331. Minimum length of employment is > 3 months.

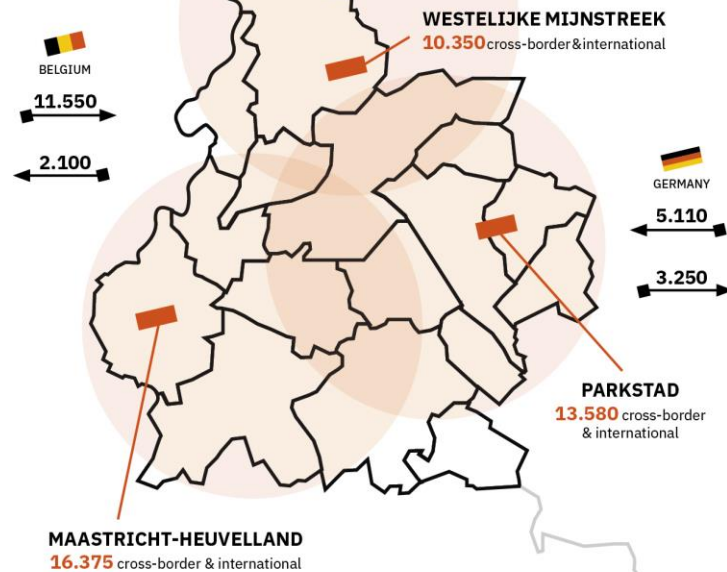
Labour migrant: An economically active employee whose purpose is to work and earn an income in an immigration country (on his/her own initiative and voluntarily).

SOURCES

- Statistics Netherlands (CBS), 2021
- Decisio International Monitor, 2022

WELCOME TO MAASTRICHT REGION

40.305
CROSS-BORDER WORKERS AND INTERNATIONALS WORKING IN SOUTH LIMBURG



TOP 3 SECTORS

- | Knowledge workers | Labour migrants |
|-------------------|-----------------------|
| Business services | Agency temporary work |
| Education | Leisure |
| Health Care | Business services |

KEY PARTNERS MAASTRICHT REGION



Cross-border employment Service
Location: Maastricht & Kerkrade

Promotes the cross-border labour market by helping employers and job seekers finding each other within our 3 borders.



Cross-border information point
Location: Maastricht & Kerkrade / Aachen-Eurode

Promotes the cross-border labour mobility by offering personalised advice to employers, employees and job seekers on topics as social insurance and taxes.

EXPAT CENTRE MAASTRICHT REGION

Expatriate Centre Maastricht Region
Location: Maastricht

Assists international employees and their employers in residence and work matters for South Limburg.

Issues residence papers to new foreign inhabitants of South Limburg together with the Immigration and Naturalisation Service (IND).



Talent Coalition
Location: Maastricht

South Limburg is a cooperation partner of the national Talent Coalition. This platform of affiliated regions is committed to both attracting higher educated talent to the Netherlands and retaining this international talent within the Netherlands. In this cooperation, Maastricht Region focusses on the sectors life sciences and health, artificial intelligence and data science, chemical innovation and medical logistics

ASSOCIATED PARTNERS



ITEM studies and resolves problems in the cross-border region and to cooperation, including the labour market related to taxation, social security, health and recognition of qualifications.



EURES The European Employment Service is a cooperation network designed to facilitate the free movement of workers within the EU 28 countries plus Switzerland, Iceland, Liechtenstein, and Norway.



MOST IMPORTANT QUESTIONS

LABOUR MARKET PARTNERS



WELCOME TO MAASTRICHT REGION

Euregionale samenwerking



Regionale
Werkgeversservicepunten (4 WSP's):

Belgische arbeidsmarktpartners:



Services Grensarbeid



GrensInfoPunten



Expat Centre Maastricht Region

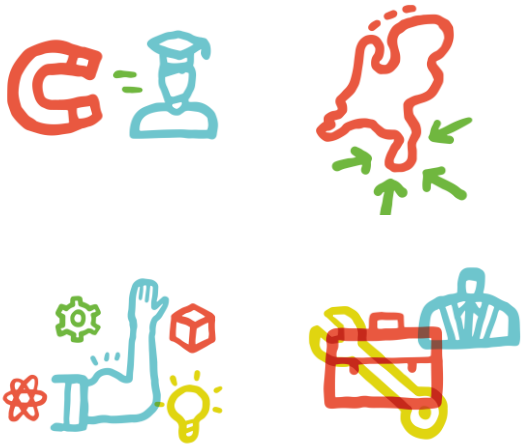


Duitse arbeidsmarktpartners:





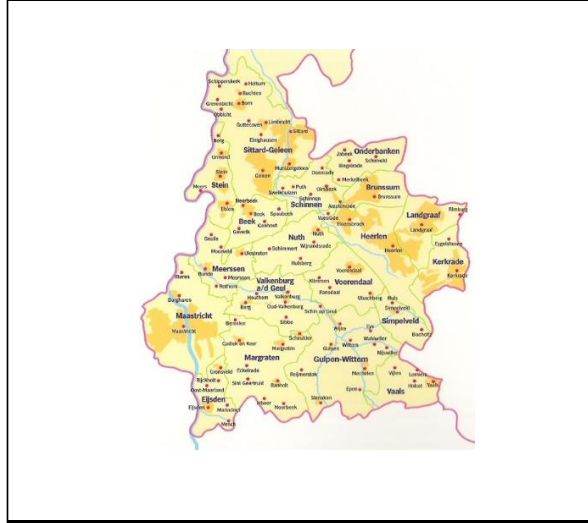
- Grensarbeid (trilateraal bestuur)
- Regionale one-stop-shops
- Politieke erkenning



- Zuid-Limburg, groeiende kennisintensieve grensregio
- *(Naast regionale- ook een)* euregionale & internationale arbeidsmarktaanpak

WELCOME TO MAASTRICHT REGION

Integrale aanpak 2024



Regional labour market approach	Euro-regional labour market approach	International labour market approach
<p style="text-align: center;">Front-office Public Employment Service (UWV/EURES) Local/ Regional Employer Services</p> <p style="text-align: center;">Back-office Social Services (Municipalities) Benefit Authority (UWV)</p>	<p style="text-align: center;">Front-office Cross-border Employment Services Maastricht (1) Cross-border Employment Services Kerkrade (2) Public Employment Services Belgium and Germany EURES Belgium, Netherlands, Germany</p> <p style="text-align: center;">Back-office Cross-border Information Point Maastricht (3) Cross-border Information Point Aachen-Eurode (4)</p>	<p style="text-align: center;">Front-office Talent Coalition (5) International Career Services (to start)</p> <p style="text-align: center;">Back-office Expatriate Centre Maastricht Region (6)</p>



Samenwerkingsovereenkomst drie
centrumgemeenten



Coalition of the Willing bestaande uit o.a.
onderwijspartners, werkgevers, de
Brightlands Campussen en Liof



Meerjarenprogramma
rondom “aantrekken en behouden
euregionaal & internationaal talent in kennis-
en kundeberoepen”.

WELCOME TO MAASTRICHT REGION

Uitvoering & sturing programma



WELCOME TO MAASTRICHT REGION

Resultaten programma uitvoering 2024



- European Career Fair @MIT Boston

- Ontbijtsessies werkgevers in de grensregio

- Kennissessies voor internationals

WELCOME TO MAASTRICHT REGION

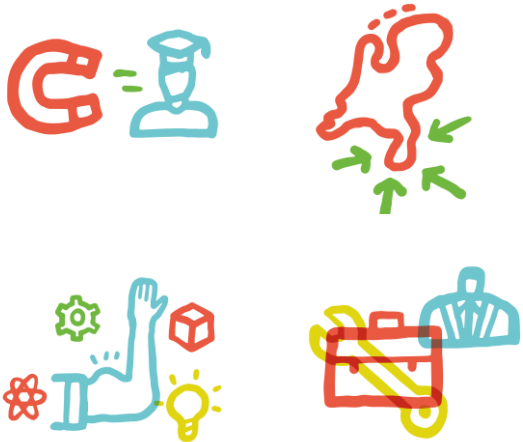
Resultaten programma uitvoering 2024



- Internationals meet recruiters

- Belgische MedTech/ Biotech Beurs

- Samenwerking met de grootste Duitse banenbeurs



- Uitbreiden coalitie partners (B/D)
- Intensiveren samenwerking
- Evenementenplanning & marktbenadering
- Onderzoek “academic talent gap” → Future Place Leadership

**WELCOME TO
MAASTRICHT REGION**

Vragen & opmerkingen